



# Port Perry/Uxbridge Minor Hockey Associations Amalgamation Meeting

March 31, 2016



# AMALGAMATION COMMITTEE

- Richard Davenport – President UMHA
- Alene Swan - UMHA
- Ben Schell - UMHA
- Heather Cargill – UMHA
- Gary Vanderveen - Blades
- Brad Turner – President PPMHA
- Christina Pasternak - PPMH
- Jeff Boake - PPMH
- Stephen Laird - PPMH
- Raymond Paton - PPMH



WHY AMALGAMATE?



# GUIDING PRINCIPLES OF THE COMMITTEE

- To facilitate the Amalgamation of Port Perry Minor Hockey and Uxbridge Minor Hockey
- To create a cohesive new hockey association that will allow hockey to thrive in both communities
- To provide the opportunity for players to compete at the appropriate skill and age level to maximize their hockey opportunities



# GUIDING PRINCIPLES OF THE COMMITTEE

- To broaden skill development at the House League and Rep levels for coaches and players alike
- Promote an environment that fosters volunteerism at the Executive, Coach and Parent level
- To honour historic facility usage commitments that have existed with the two municipalities



# GUIDING PRINCIPLES OF THE COMMITTEE

- To explore and pursue the feasibility of higher level representative hockey and create MORE opportunities at various levels
- To encourage a balance of responsibility for the new Organization across the Executive and Coach levels
- Work on the basis of consensus that embraces the guiding principals



# WHAT HAPPENS IF WE STAY THE SAME?

- Youth population in the two communities continues to decline impacting registration
- Players in each center must continue to go elsewhere for higher competition as NRP players (A, AA)
- Potentially fewer teams, lose Major/Minor, Bantam, Midget, lose AE option
- Limited Select program



# TRANSITION TO THE NEW ASSOCIATION

- The existing boards will run the day to day hockey for the 2016-2017 season
- The Amalgamation Committee will handle any business needed to prepare for the 2017-2018 season until the new board is elected April 12, 2017



## THE EXECUTIVE

President	2 Years maturing in even years
VP Rep	2 years maturing in odd years
VP HL	2 years maturing in even years
VP OWHA	2 years maturing in odd years
OMHA Rep	2 years maturing in odd years
OWHA Director	2 years maturing in even years
Secretary	2 years maturing in odd years
Director of Finance	2 years maturing in even years
Director of Risk Management	2 years maturing in odd years
Head Coach	1 year
Head Trainer	1 year
Development Manager	1 year
Sponsorship Manager	1 year
Marketing Manager/Webmaster	1 year
Equipment Manager	1 year
Convenors	1 year



## FINANCES

- Both centres have a positive financial position
- Neither have any significant debts/contracts/obligations that would be a burden to the new association
- A cost of amalgamation will be calculated and shared equally by both associations



# OMHA

- AA and AE still to be approved
- AAA Affiliation will not change



## PROPOSED NEW BOUNDARY

- Borders of each associations are joined and the outlining borders are the borders for the new association.
- OWHA (Blades) borders remain unchanged.



## REP TEAMS - CURRENT

- Currently both Centres run the following Rep teams

### PPMH 2015-2016

Major Midget  
Minor Midget  
Minor Bantam  
Major Pee wee  
Minor Pee wee  
Major Pee wee AE  
Major Atom  
Minor Atom  
Novice  
Tyke 7 MD

### Blades Teams

Midget A  
Midget B  
Bantam BB  
Pee wee BB  
Atom B

### UMHA 2015-2016

Major Midget  
Major Bantam  
Minor Bantam  
Bantam AE  
Major Pee wee  
Minor Pee wee  
Pee wee AE  
Major Atom  
Minor Atom  
Atom AE  
Novice  
Tyke 7 MD



# REP COACH SELECTION PROCESS

2017-2018 SEASON

- Coaches will be selected by a coaching selection committee which will include 5 members from each centre and 1 independent individual
- Interviews will include 2 members from each centre and the independent individual
- It is expected that all coaching decisions will be made before the end of April



# PLAYER SELECTION PROCESS

2017-2018 SEASON

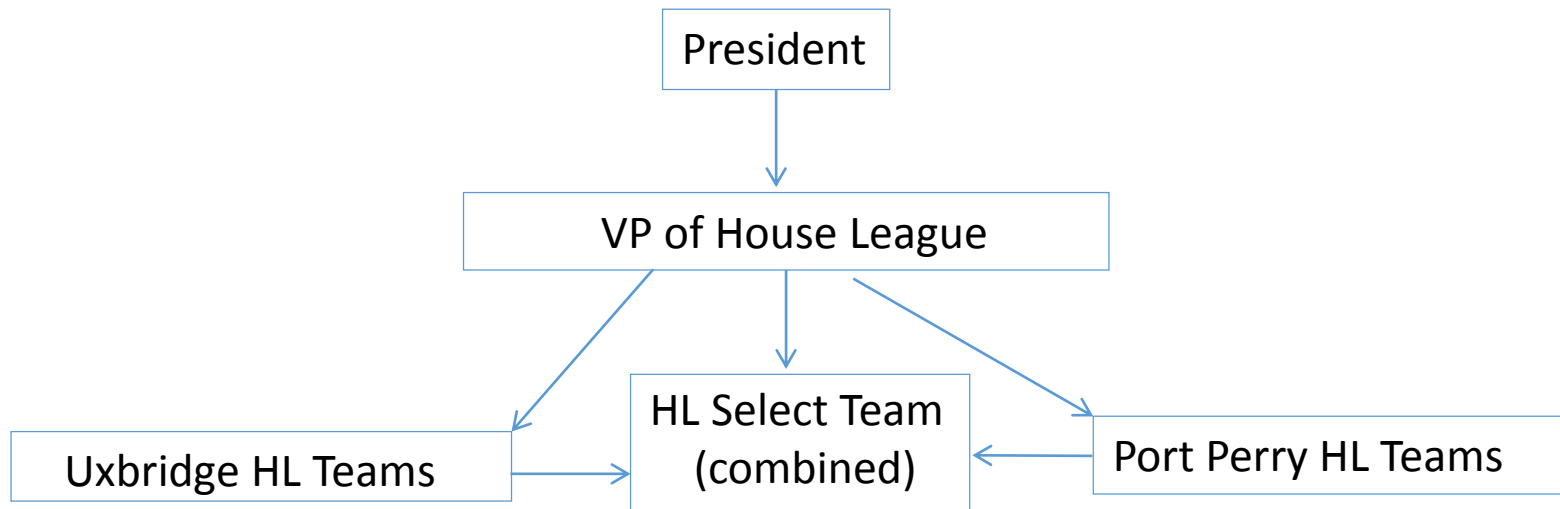
- Players for both AA and AE from Tyke 7 MD to Minor Midget will be picked in the spring 2017
- Major Midget and Midget AE will be end of Aug/early September
- Player selection committee must approve first 12 players including at least 1 goalie
- Coach selects remaining 5



# HOUSE LEAGUE

- House league teams will be guaranteed one game and one practice in town per week. Exceptions are Senior girls (Limited practices or more games depending on registration numbers) and Midget Juvenile (1.5hr games only)
- Bantam and below HL guaranteed weekend games

# How Will House League Look?



- House League will, for most intents and purposes will look the same, it will be centrally administered under the amalgamated Board by one VP of House League. Both centres, although combined, will have separate HL divisions for Uxbridge and Port Perry; which will continue to be run very similar to the way they do now
- Both Port Perry and Uxbridge will have Division Convenors who will work in conjunction with the VP HL to oversee the program
- Christmas Tournament and year end Playoffs will continue, however, with our new, larger association, we will be able to offer new opportunities such as Winner of Uxbridge HL tournament in each division plays Winner of Port Perry HL tournament in each division
- Select program will be stronger, more competitive. We anticipate being able to offer Minor and Major teams in most, if not all, divisions



# GIRLS HOCKEY

- No major changes expected
- Equal opportunity to ice time at house league and Rep. levels
- Equal opportunity to players and coach development
- Remain rostered with OWHA
- Similar executive membership as with new association with sub-committees dealing with girl issues



## COST OF HOCKEY

- The cost of playing in the new association should not be significantly different than the current cost to play in the players respective centres
- The cost will reflect the current cost of ice, ref's, administration and development
- The total cost of Rep hockey will vary from team to team depending on individual team budgets



# ASSOCIATIONS NEW NAME

- The name of the new association will not contain either Stars, Bruins or Predators
- Potential names, nick names and logos will be solicited from the members of the involved associations. From the names received, 3 will be selected by the committee and will be voted on by the members
- The selection of team colours will be recommended based on the name and approved by the OMHA and Lakeshore League



# AMALGAMATION VOTE

- Each centre holds their own vote as per their constitution with regards to voter eligibility
- In order for Amalgamation to be successful each community must endorse the proposal by a minimum of a TWO-THIRDS majority in favour



## VOTING DAY

- Port Perry AGM, April 13, 2016  
Scugog Community Centre
- Uxbridge AGM, April 17, 2016  
Uxbridge Community Centre

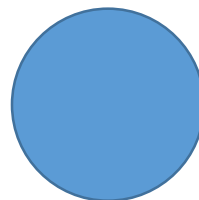


## THE QUESTION

- Do you support the amalgamation of the Port Perry Minor Hockey Association and the Uxbridge Minor Hockey Association to form a new hockey association? (Name to be determined at a later date)



YES  
(we join)



NO  
(Stay the same)



BOTH BOARDS

**Unanimously endorsed the  
amalgamation of  
PPMHA-UMHA-/Blades into one  
association and advise you do the  
same.**



THANK YOU FOR  
YOUR TIME!